

Blackline F10⁺

Compact, two-way passive system

features

- ▶ Compact two-way system
- ▶ User rotatable 90° x 50° horn
- ▶ Flexible mounting options
- ▶ Five year limited warranty

applications

- ▶ Club sound reinforcement
- ▶ Unobtrusive stage monitoring
- ▶ Fill-in system for main PA
- ▶ AV presentations



professional

The Blackline F10⁺ is a versatile, two-way passive system, designed to provide exceptional sound reinforcement and stage monitoring from a very compact enclosure. It features a powerful 10" (250mm) low frequency driver and a 1" (25mm) HF compression driver mounted on a constant directivity 90° x 50° horn. Depending on the application, the HF horn can be rotated to allow the multi-angle enclosure to be used in either its vertical or horizontal orientation. A demodulating ring fitted to the LF driver reduces distortion and improves the performance at the upper end of the LF driver's range at high levels. Additionally, the directivity of the LF driver has been matched to the HF horn by a combination of optimisation of the water-resistant LF cone profile and improved crossover design.

The two-way passive design of the F10⁺ enables simple, high performance systems to be put together whilst minimising the number of amplifier channels required. Where extra low frequency is required, sub-bass systems such as the Blackline S12⁺, S15⁺ or S18⁺ may be added.

The enclosure is provided with ten M8 inserts and four M8 bracket inserts for a variety of mounting arrangements. It is also provided with a top hat fitting for use with a speaker stand or as a pole socket for mounting above a Blackline⁺ subwoofer.

Use of a controller with the F10⁺ is optional. For demanding applications, an M3⁺ or DXI controller configured to perform EQ and limiter functions is recommended.

Century Point, Halifax Road, Cressex Business Park,
High Wycombe, Buckinghamshire HP12 3SL, England.
Telephone: +44 (0)1494 535312 Facsimile: +44 (0)1494 438669
E-mail: info@martin-audio.com
All information is Copyright © 2008 Martin Audio Ltd.

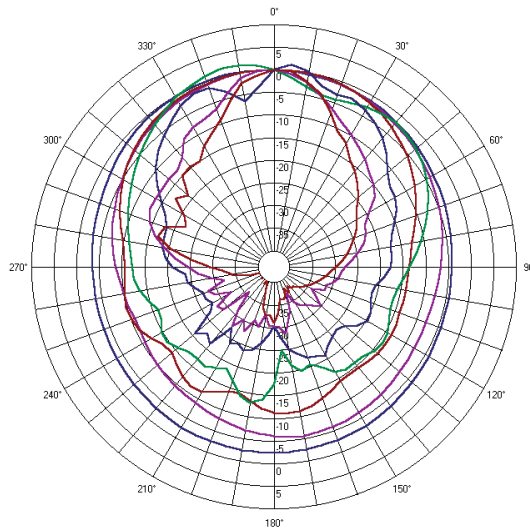


Blackline F10⁺

Compact, two-way passive system

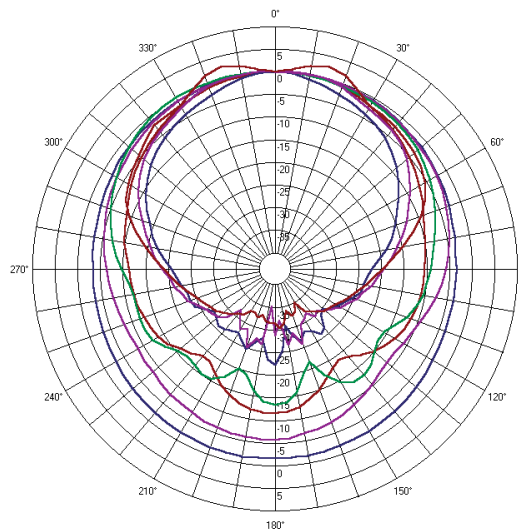
polar plots

professional



F10⁺ Vertical

- 200Hz & 1/3 8ve
- 400Hz & 1/3 8ve
- 800Hz & 1/3 8ve
- 1600Hz & 1/3 8ve
- 3200Hz & 1/3 8ve
- 6400Hz & 1/3 8ve
- 12800Hz & 1/3 8ve



F10⁺ Horizontal

- 200Hz & 1/3 8ve
- 400Hz & 1/3 8ve
- 800Hz & 1/3 8ve
- 1600Hz & 1/3 8ve
- 3200Hz & 1/3 8ve
- 6400Hz & 1/3 8ve
- 12800Hz & 1/3 8ve

Century Point, Halifax Road, Cressex Business Park,
High Wycombe, Buckinghamshire HP12 3SL, England.
Telephone: +44 (0)1494 535312 Facsimile: +44 (0)1494 438669
E-mail: info@martin-audio.com
All information is Copyright © 2008 Martin Audio Ltd.

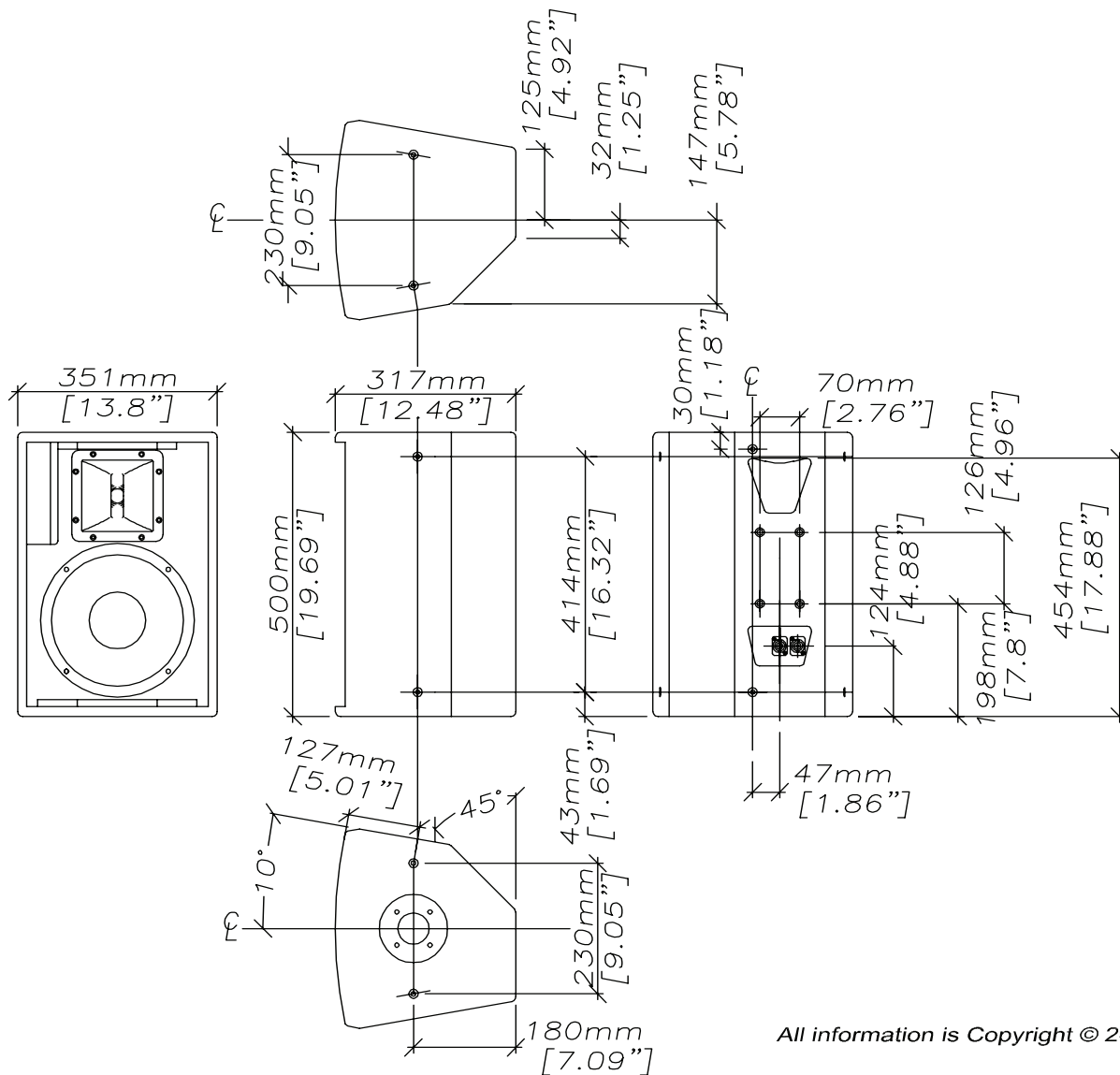


Blackline F10⁺

Compact, two-way passive system

overall dimensions

professional



All information is Copyright © 2007 Martin Audio Ltd.

F10+

Century Point, Halifax Road, Cressex Business Park,
High Wycombe, Buckinghamshire HP12 3SL, England.
Telephone: +44 (0)1494 535312 Facsimile: +44 (0)1494 438669
E-mail: info@martin-audio.com
All information is Copyright © 2008 Martin Audio Ltd.



Blackline F10⁺

Compact, two-way passive system

professional

technical specifications

| | |
|------------------------|--|
| TYPE | Compact, two-way passive |
| FREQUENCY RESPONSE (5) | 65Hz-20kHz \pm 3dB -10dB @ 56Hz |
| DRIVERS | 10" (250mm)/2.5" (63.5mm) voice coil LF driver 1" (25mm) exit HF compression driver |
| RATED POWER (2) | 300W AES, 1200W peak |
| RECOMMENDED AMPLIFIER | 300W-1000W into 4 ohms |
| SENSITIVITY (6) | 96dB |
| MAXIMUM SPL (7) | 119dB continuous, 125dB peak |
| NOMINAL IMPEDANCE | 8 ohms |
| DISPERSION (-6dB) | 90° horizontal, 50° vertical |
| CROSSOVER | 2.5 kHz passive |
| ENCLOSURE | 27.7 litre, multi-laminate birch ply |
| FINISH | Textured black paint |
| PROTECTIVE GRILLE | Black perforated steel |
| CONNECTORS | 2 x Neutrik NL4 |
| PIN CONNECTIONS | FR+,- : 1+,1-, Link thro': 2+,2- |
| FITTINGS | 10 x M8, 4 x M8 threaded inserts 1 x mounting pole socket 1 x pocket handle |
| DIMENSIONS | (W) 351mm x (H) 500mm x (D) 317mm (W) 13.8ins x (H) 19.7ins x (D) 12.5ins |
| WEIGHT | 17kg (37lbs) |

accessories

| | |
|---------|---|
| HTKF10Y | Flying Yoke for F10 ⁺ |
| HTKM20 | Wall Bracket for F10 ⁺ and F12 ⁺ |
| HTKCT04 | Pole for Blackline ⁺ |
| HTKCT05 | 8mm Shouldered Eye Bolt for F8 ⁺ , F10 ⁺ , F12 ⁺ , F15 ⁺ |

Notes

- (1) Measured on-axis in half space at 2 metres, then referred to 1 metre.
- (2) AES Standard ANSI S4.26-1984.
- (3) Measured in half space at 2 metres with 1 watt input, using band limited pink noise, then referred to 1 metre.
- (4) Measured in half space at 2 metres using band limited pink noise, then referred to 1 metre.
- (5) Measured on-axis in open (4 π) space at 2 metres, then referred to 1 metre.
- (6) Measured in open (4 π) space at 2 metres with 1 watt input, using band limited pink noise, then referred to 1 metre.
- (7) Measured in open (4 π) space at 2 metres using band limited pink noise, then referred to 1 metre.

Trade Descriptions Act

Due to Martin Audio's policy of continuing improvement, we reserve the right to alter these specifications without prior notice. Martin Audio is committed to refining state of the art sound reinforcement, combining in-depth product and field applications research with advanced manufacturing techniques. Every Martin Audio product is built to the highest manufacturing standards and rigorously tested to ensure that it meets the performance criteria specified in the design.

architectural and engineering specifications

The loudspeaker system shall be of the two-way passive type consisting of one 10" (250mm)/2.5" (63.5mm) voice coil direct radiating reflex loaded low frequency transducer and one 1" (25mm) exit HF compression driver mounted on a user rotatable constant directivity horn in a multi-angled enclosure. The enclosure shall be of a multi-laminate birch ply construction with integral pole mount and threaded inserts for wall and ceiling mounting. Low and high frequency sections shall be integrated by an internal 2.5kHz passive crossover network.

Performance of the loudspeaker system with its electronic controller shall meet or exceed the following criteria:

Frequency response measured 1 metre on axis shall be 65Hz-20kHz \pm 3dB.

High frequency dispersion at -6dB points shall be 90°H x 50°V.

Power handling shall be 300W AES, 1200W peak. Rated impedance shall be 8 ohms.

Maximum SPL measured at 1 metre on axis shall be 119dB continuous, 125dB peak.

Dimensions (W) 351mm x (H) 500mm x (D) 317mm (13.8ins x 19.7ins x 12.5ins).

Weight 17kg (37lbs).

The loudspeaker system shall be the Martin Audio F10⁺.

Century Point, Halifax Road, Cressex Business Park,
High Wycombe, Buckinghamshire HP12 3SL, England.
Telephone: +44 (0)1494 535312 Facsimile: +44 (0)1494 438669
E-mail: info@martin-audio.com
All information is Copyright © 2008 Martin Audio Ltd.

